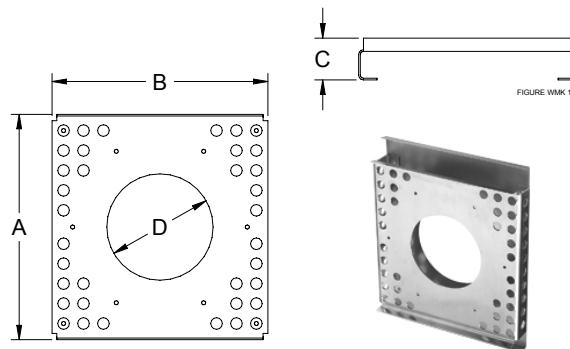




WMK SERIES WALL MOUNTING KITS

Constructed out of rugged 5052 Aluminum.
ETL Recognized for zero - clearance
termination on combustible walls.

WMK SERIES WALL MOUNT KIT DIMENSIONS (ALL DIMENSIONS ARE IN INCHES)				
	A	B	C	D
WMK-8	17.00	16.25	3.25	8.00
WMK-10	24.00	23.25	3.38	10.00
WMK-12	29.00	28.38	3.25	12.00



WARNING

When using the WMK-Series mounting kit on a combustible wall, it is recommended to use vent pipe rated for reduced clearances to combustibles. Vent pipe manufacturer's clearances must be adhered to.

WMK mounting location must be based on "Termination Clearances" found in the Auto-Draft instruction manual for U.S. and Canadian installations.

IMPORTANT: The diameter of hole in the Backing Plate for each kit is 9 1/8" for WMK-8, 11 1/8" for WMK-10, 13 1/8" for WMK-12. The Backing Plate hole may be trimmed out for larger pipe diameters.

- Using Backing plate as a template, center over opening on wall to mark bolt hole locations on wall. There are (4) for the WMK-8 and (8) for the WMK-10 & WMK-12. Flanges of Backing Plate must face top and bottom. **IMPORTANT:** Flanges of backing plate must be level when marking bolt hole locations on wall, (See Diagram A). Drill out and tap holes as necessary for appropriate lag bolts to support the weight of the Auto-Draft® unit as shown below.

MODEL		FSAD-8	FSAD-10	FSAD-12	VSAD-8	VSAD-10	VSAD-12
Weight	lbs	47	97	138	48	101	140
	kgs	21.32	43.99	62.59	21.77	45.80	63.49

- Insert Inlet Collar through WMK and secure the Inlet Collar with self tapping stainless steel screws to a length of vent pipe required to get through wall. Make sure the screws are long enough to penetrate vent pipe to adequately secure Inlet Collar. Slide Backing Plate over vent pipe with flanges facing towards WMK. Place a bead of hi-temp silicone on WMK back flange and slide Backing Plate up to WMK, (See Diagram A).
- With Backing Plate pushed against WMK hi-temp siliconed flange, place a bead of hi-temp silicone on the Backing Plate back side around perimeter of pipe opening and perimeter of Backing Plate and firmly push assembly against wall with flanges facing top and bottom, (See Diagram B). WMK and Backing Plate must be level. Secure WMK and Backing Plate to wall with appropriate stainless steel lag bolts, washers and lock nuts, installer supplied. Hardware utilized must support Auto-Draft® weight as shown above.

WARNING

Auto-Draft® motor side is heavy. Housing hinge pin should be removed for easier installation. Support Venter base when removing hinge pin. When removing motor side, use extreme caution so internal parts such as the impeller are not damaged, (See Diagram C).

- IMPORTANT:** Housing hinge **must** face down when mounting on a side wall, (See Diagram D). Align WMK studs with holes in Auto-Draft® Inducer base, insert stainless steel washers and secure the Auto-Draft® to the WMK with provided stainless steel keps nuts.
- Seal around the Inducer base and the WMK with hi-temp silicone. Make sure it is watertight so water can't slip in between the Inducer base and WMK.
- Reattach Auto-Draft® motor side to Base making sure that hinge pin is fully inserted in hinges, (See Diagram C).
- Apply a bead of hi-temp silicone on the cooling air inlet on top of Auto-Draft® and firmly adhere triangle shaped cooling air inlet cover to cooling air inlet, (See Diagram E). This procedure will prevent rain and/or snow from entering Inducer.

DIAGRAM A

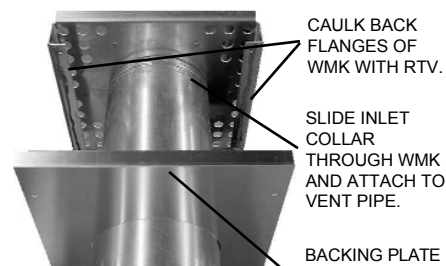


DIAGRAM B

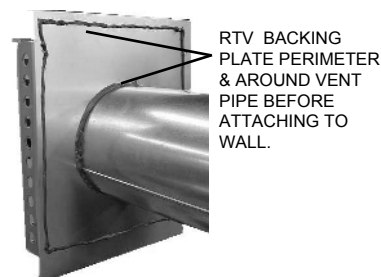


DIAGRAM C

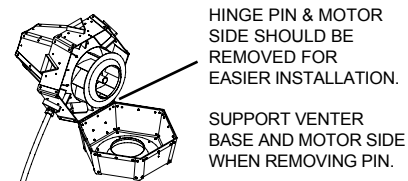


DIAGRAM D

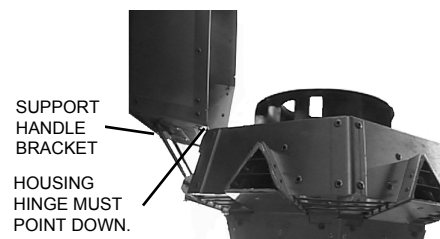


DIAGRAM E

