



Submittal Data Sheet

VSUB16 Variable Speed Universal Blower

Job Name: _____

Equipment Rep: _____

Contractor: _____

Prepared By: _____

Arch./Engr.: _____

Date: _____

Description:

The VSUB16 Variable Speed Universal Blower is suitable for providing combustion air or sidewall or vertically venting non-condensing (condensing applications require model VSUB16SS with stainless steel impeller) heating appliances, dryers and ovens. Can be installed indoors or outdoors.

Use with the MPC-Series Modulating Pressure Controllers, VFD and Pressure Sensor for an automatic-variable speed system which will modulate to always deliver the perfect amount of draft, combustion air or ventilation.

Housing Construction:

Constructed of 14-gauge, Type 316L stainless steel with continuous welds. The blower outlet rotates 180° for installation flexibility. The motor chassis slides away from the housing on polyethylene guides for easy motor and impeller access.

Impeller:

Backward inclined, high temperature coated, Class 1 impeller is both dynamically and statically balanced with permanently attached balancing weights.

Motor:

Three phase, 2 HP, 208-230/460 VAC, TEFC, EPACT High Efficiency Rated, arctic-duty, thermal overload protected, permanently lubricated and sealed ball bearing.

Standard Equipment:

- 4" x 4" weatherproof junction box with 4' conduit
- Square to round vent pipe adapter
- PSA-1 Fan Proving Switch
- FFP-1 Freeze and Fire Protection Limit (FFP-1 For combustion air applications only!)
- Condensate drain kit

Optional Controls:

- MPC Modulating Pressure Controller
- MPC1 Modulating Pressure Controller Interlocked
- MAC1E Multiple Appliance Control
- MAC4E Multiple Appliance Control
- IPS-1 Indoor Pressure Sensor with Decorative Cover
- VFD-Series Variable Frequency Drives

Temperature Rating:

U.S. and Canada 575°F / 300°C

Listings:

ETL # 56826
 UL 378 - Draft Equipment / Variable Speed
 UL 705 - Power Ventilators
 CSA-CAN3-B255-M81

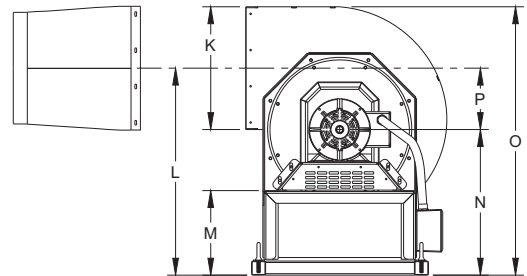


Warranty:

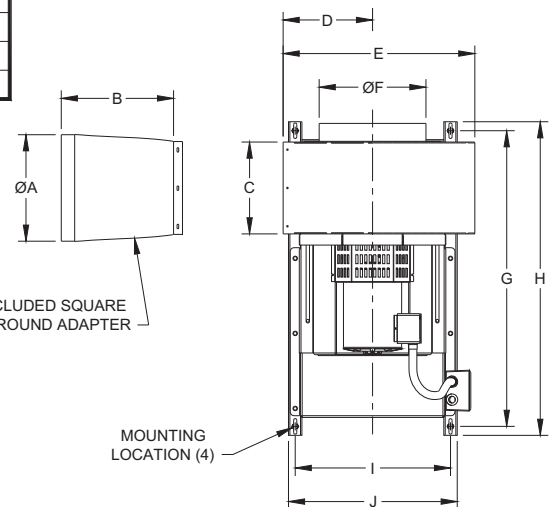
2 year mechanical

Model VSUB16		208-230 Volt	460 Volt
Power	hp	2	2
Amps	A	6.0 - 5.6	2.8
Voltage	VAC	3x208-230	3x460
Weight		285 Lbs. / 129 Kgs.	

	VSUB16
A	15 7/8"
B	14"
C	11 15/16"
D	13 5/16"
E	27 1/2"
F	15 7/8"
G	41 11/16"
H	43 11/16"
I	23 1/4"
J	24 3/4"
K	16"
L	26 13/16"
M	11 3/4"
N	18 7/8"
O	34 13/16"
P	7 15/16"



END VIEW



TOP VIEW

INCLUDED SQUARE TO ROUND ADAPTER

MOUNTING LOCATION (4)