



TJERNLUND PRODUCTS, INC.

1601 Ninth Street • White Bear Lake, MN 55110-6794
PHONE (800) 255-4208 • (651) 426-2993 • FAX (651) 426-9547
Visit our web site • www.tjernlund.com

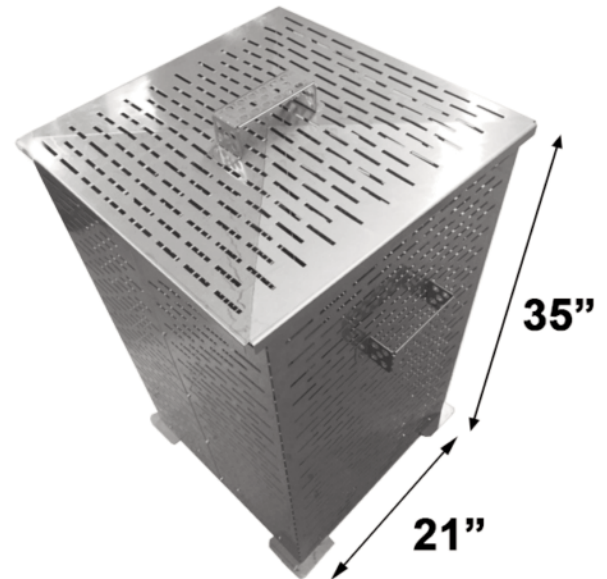
**READ INSTRUCTIONS CAREFULLY
PRIOR TO ASSEMBLY & OPERATION**

Extra Large Burning Box (9800803)

WARNINGS:

- Do not handle these parts without hand protection! All parts of this product are made of Stainless Steel which can have sharp edges!!! Gloves have been provided for the user to wear during the assembly, handling and use of this product.
- Never leave this product unattended! This product must be supervised when in use and stored out of reach of children and unprotected adults when not in use.
- Never use this product within 15 feet of combustible materials. This device gets extremely hot when in use and can start adjacent combustible materials on fire.
- Always insure the burning materials in this device are 100% extinguished before no longer supervising it.
- Never touch this product when in use. It does burn extremely hot and will very quickly burn anything that touches it including human flesh.
- Never have children within 20 feet of this product. Cuts or burns can result if the product is touched or handled without hand protection.

CAUTION: The parts of this product can have sharp edges and can cause cuts if not handled properly. Wear a set of gloves **ANYTIME** this product is handled. Put provided gloves on to assemble this product. Make sure all parts are accounted for. Place parts in an orderly manor on a surface where they can be easily identified.



ASSEMBLY

Start by manually forming the individual small parts. Locate the (3) handles and form them into the finished handle shape. Each bend should be 90 degrees. A pliers can be used to help with the forming process.



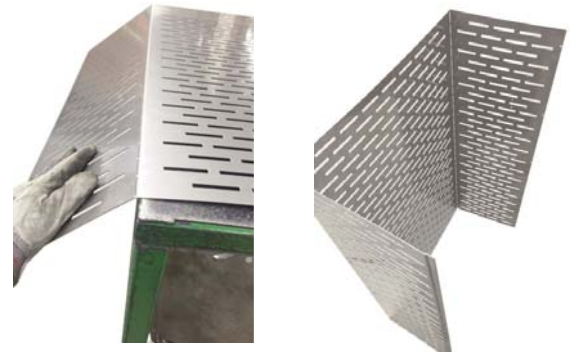
Locate the (4) foot assemblies and bend tabs up to form 90 degrees as pictured.



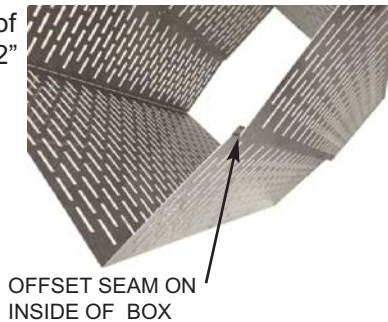
Now locate the (4) support brackets. Form the end tabs 90 degrees towards the offset as pictured.



All that remains for the manual forming steps is the forming of the (2) main panels. Each panel has an offset on one edge of the panel. This edge will be behind the other panel's opposite edge. Form the panels as pictured to 90 degrees. Rotate the part and form the other side as pictured. Repeat this step for both panels.



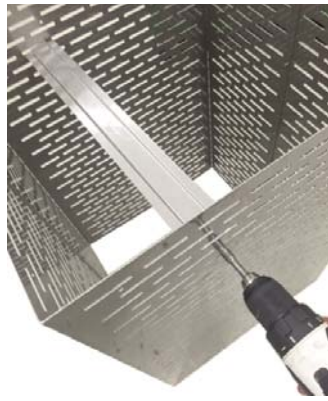
Align both formed panels with the offset edge on the inside of burning box. Using a drill with 1/4" nut runner bit and a 11/32" nut driver or wrench to hold nut on inside, install (5) of the 3/8" X 8-32 bolts and nuts down each of the 2 seams.



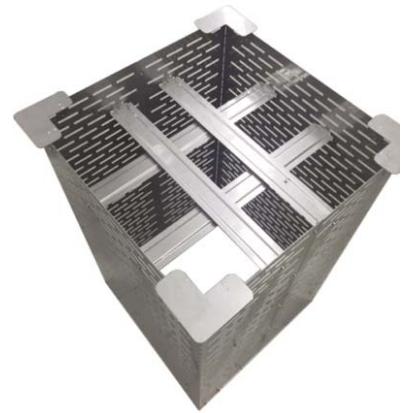
OFFSET SEAM ON
INSIDE OF BOX



Locate the open edge of the box that has 2 holes near the edge of the corners. This open end of the box should face up for the next 2 steps. This is the bottom of the box. Install the (4) support brackets as pictured.



Hold the (2) tabs on each foot to the inside of the box. Attach each of the (4) feet to the corners as pictured.



Flip the box over and stand it on its feet. Install the (2) side handles as pictured. Place the cover over the box and install top handle as pictured.

